

# SNOW & ICY ROAD CONDITIONS INFORMATION

## When does the City Sand/Plow?

Spot spreading of sand and/or salt is the first step of the City's snow and ice control. This is done to provide reasonable driving surfaces in the winter road conditions.

Drivers should always use caution while driving when snow or icy conditions are present.

Plowing typically begins when two or more inches of snow has accumulated on the roads. Primary routes will always have the first priority, with hills and intersections on primary routes plowed first.

## What streets have priority to be plowed?

The Public Works Crew plows main streets to allow citizens access to services and to help provide access for Fire, Police and emergency services. Hills, curves, bridges and intersections on these routes will receive treatment first. When primary routes are treated and safe for travel, snow plows then move to secondary routes and may address residential streets, however, depending on the severity of the event, residential streets may not be plowed for some time.

See the attached route map for primary route information.

[Snow Removal Map](#)

## Should I pass a snow plow?

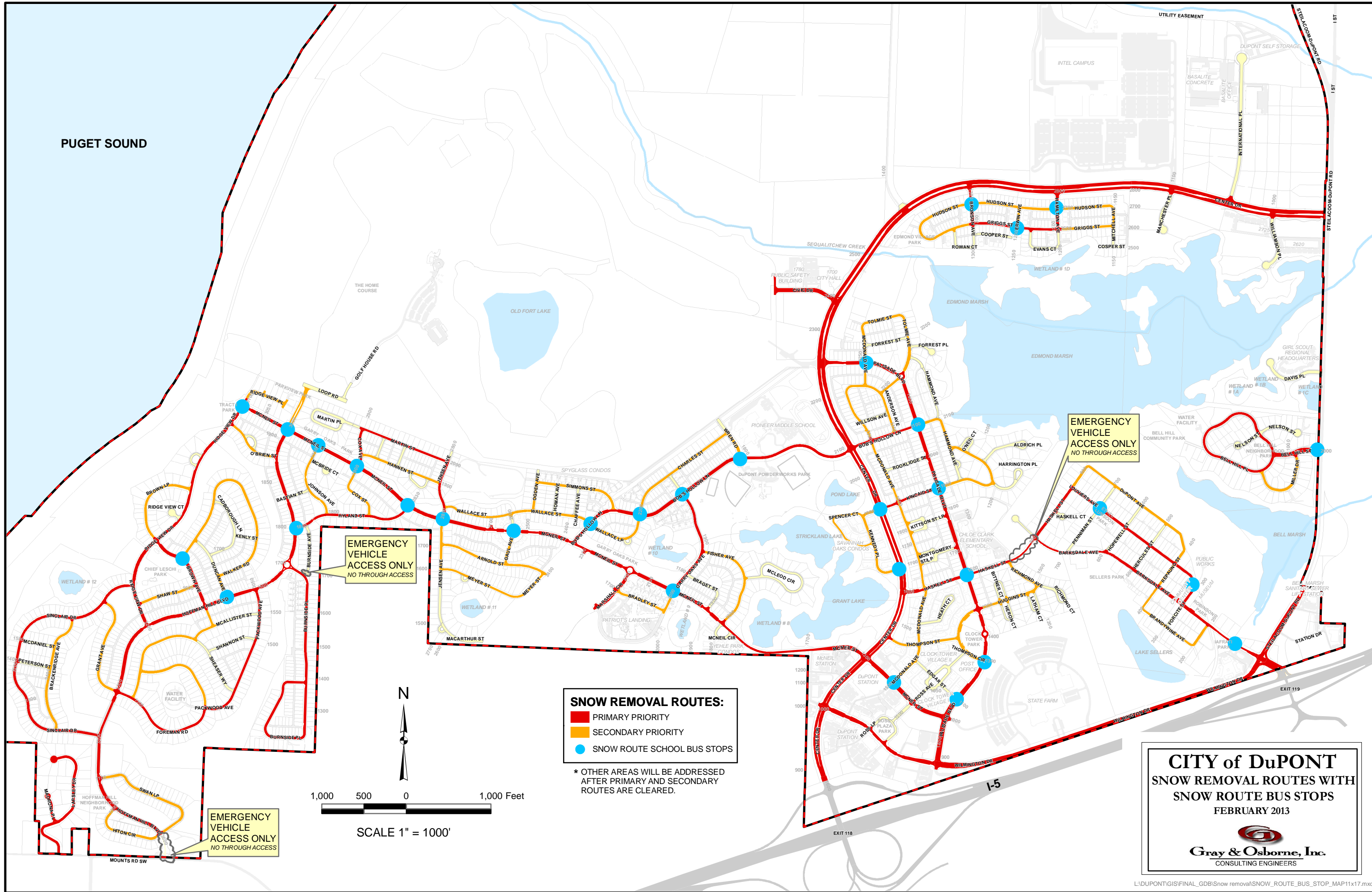
No, not if it is plowing the road. They are making the roadway safer for you to travel on. Remember to stay a safe distance – at least 3 car lengths behind the snow plow.

## How do I report a hazardous roadway?

Call the Public Works Department at (253) 912-5381 during regular business hours, or for after hours emergencies, please call (253) 912-5389



PUGET SOUND



EMERGENCY VEHICLE ACCESS ONLY NO THROUGH ACCESS

EMERGENCY VEHICLE ACCESS ONLY NO THROUGH ACCESS

EMERGENCY VEHICLE ACCESS ONLY NO THROUGH ACCESS

**SNOW REMOVAL ROUTES:**

- █ PRIMARY PRIORITY
- █ SECONDARY PRIORITY
- SNOW ROUTE SCHOOL BUS STOPS

\* OTHER AREAS WILL BE ADDRESSED AFTER PRIMARY AND SECONDARY ROUTES ARE CLEARED.

1,000 500 0 1,000 Feet

SCALE 1" = 1000'

**CITY of DuPONT**  
**SNOW REMOVAL ROUTES WITH**  
**SNOW ROUTE BUS STOPS**  
 FEBRUARY 2013

**Gray & Osborne, Inc.**  
 CONSULTING ENGINEERS